



FLASHRIDER™ 360°



OWNER'S MANUAL

Read and understand this entire manual before riding!
DO NOT RETURN TO STORE!

NOTE: Manual illustrations are for demonstration purposes only.
Illustrations may not reflect exact appearance of actual product.
Specifications subject to change without notice.

**Please have your 21 character product I.D. code ready before
contacting Razor for warranty assistance and/or replacement parts.**

Product I.D. Code: _____ - _____ - _____

CONTENTS

Safety Warnings	1	Parts Breakdown	6
Before You Begin.....	2	Safety Reminders	7
Assembly and Set-Up	3-5	Warranty	7
Set-Up and Usage Instructions.....	5		

SAFETY WARNINGS

WARNING: SPARKS CAN INDUCE FIRE


To reduce the risk of **SERIOUS INJURY** or **FIRE**:

PARENTS and RIDERS: Make sure riders understand that sparks can start a fire. Keep sparks away from flammable or combustible substances. Use only under close adult supervision.

BE RESPONSIBLE: Safety is important. Parents must review the following warnings and instructions with each rider:

- Never use your caster trike to try to start a fire. Your caster trike emits localized sparks when the Spark Bar on a moving trike comes in contact with hardened outdoor surfaces like asphalt or concrete. Be responsible.
- For outdoor use only on solid, clean, dry hardened surfaces. Keep sparks away from substances that can catch fire, such as dry vegetation, paper, chemicals or gasoline. Sparks can induce fire.
- Do not use in any area prone to wildfires or posted by fire authorities as a Fire Hazard Zone.
- Do not ride at night.
- Keep sparks away from eyes, hair, exposed skin and clothing. Sparks can burn.
- Pull up on the Spark Handle to operate sparking feature. NEVER push down directly on the Spark Bar, spark cartridge or its cover itself.
- Spark Bar gets hot during use. Do not touch after use.

Observe all other spark safety warnings and instructions as provided elsewhere in this manual.

 **WARNING:** Riding the FlashRider 360° Caster Trike can be a hazardous activity. Certain conditions may cause the equipment to fail without fault of the manufacturer. The FlashRider 360° Caster Trike can and is intended to move, and it is therefore possible to lose control, fall off and/or get into dangerous situations that no amount of care, instruction or expertise can eliminate. If such things occur you can be seriously injured or die, even when using safety equipment and other precautions. **RIDE AT YOUR OWN RISK AND USE COMMON SENSE.**

This manual contains many warnings and cautions concerning the consequences of failing to maintain, inspect or properly use your FlashRider 360° Caster Trike. Because any incident can result in serious injury or even death, we do not repeat the warning of potential serious injury or death each time such a possibility is mentioned.

APPROPRIATE RIDER USE AND PARENTAL SUPERVISION

This manual contains important safety information. It is your responsibility to review this information and make sure that all riders understand all warnings, cautions, instructions and safety topics, and assure that young riders are able to safely and responsibly use this product. Razor recommends that you periodically review and reinforce the information in this manual with younger riders, and that you inspect and maintain your child's FlashRider 360° to insure their safety.

The recommended rider age of 6 and older for FlashRider 360° Caster Trike is only an estimate, and can be affected by the rider's size, weight or skills. Any rider unable to fit comfortably on the FlashRider 360° Caster Trike should not attempt to ride it. **A parent's decision to allow his or her child to ride this product should be based on the child's maturity, skill and ability to follow rules.**

Keep this product away from children under the age of 6 and remember that this product is intended for use only by persons who are, at a minimum, completely comfortable and competent while operating the FlashRider 360° and who understand the risks presented by such products.

DO NOT EXCEED THE WEIGHT LIMIT OF 160 lbs (73kg). Rider weight does not necessarily mean a person's size is appropriate to fit or maintain control of the FlashRider 360° Caster Trike.

ACCEPTABLE RIDING PRACTICES AND CONDITIONS

Always check and obey any local laws or regulations which may affect the locations where the FlashRider 360° Caster Trike may be used on public property. The FlashRider 360° Caster Trike is meant to be used only in controlled environments, free of potential traffic hazards and not on public streets. Do not ride your FlashRider 360° Caster Trike in any areas where pedestrian or vehicle traffic is present.

Ride defensively. Watch out for potential obstacles that could force you to swerve suddenly or lose control. Be careful to avoid pedestrians, skaters, skateboards, scooters, bikes, children or animals who may enter your path and respect the rights and property of others.

Maintain a hold on the handlebars at all times.

Never carry passengers or allow more than one person at a time to ride the FlashRider 360° Caster Trike.

Never use near streets, swimming pools, hills, steps, or sloped driveways.

Never use headphones or a cell phone when riding.

Never hitch a ride with another vehicle.

The FlashRider 360° Caster Trike is intended for use on solid, flat, clean and dry surfaces, such as pavement or level ground, without loose debris, such as rocks or gravel. Wet, slick or uneven and rough surfaces may impair traction and contribute to possible accidents. Do not ride the FlashRider 360° Caster Trike in mud, ice, puddles or water. Avoid excessive speeds that can be associated with downhill rides. Never risk damaging surfaces, such as carpet or flooring, by use of a FlashRider 360° Caster Trike indoors.

Do not ride at night or when visibility is impaired.

PROPER RIDING ATTIRE

Riders should always wear a properly fitted helmet that complies with U.S. Consumer Safety Commission (CPSC) Standard 16 CFR 1203. A helmet may be legally required by local law or regulation in your area. Elbow and kneepads, long sleeved shirt and long pants are recommended. Always wear closed toed shoes, never ride barefooted or in sandals, and keep shoelaces tied and out of the way of the wheels.

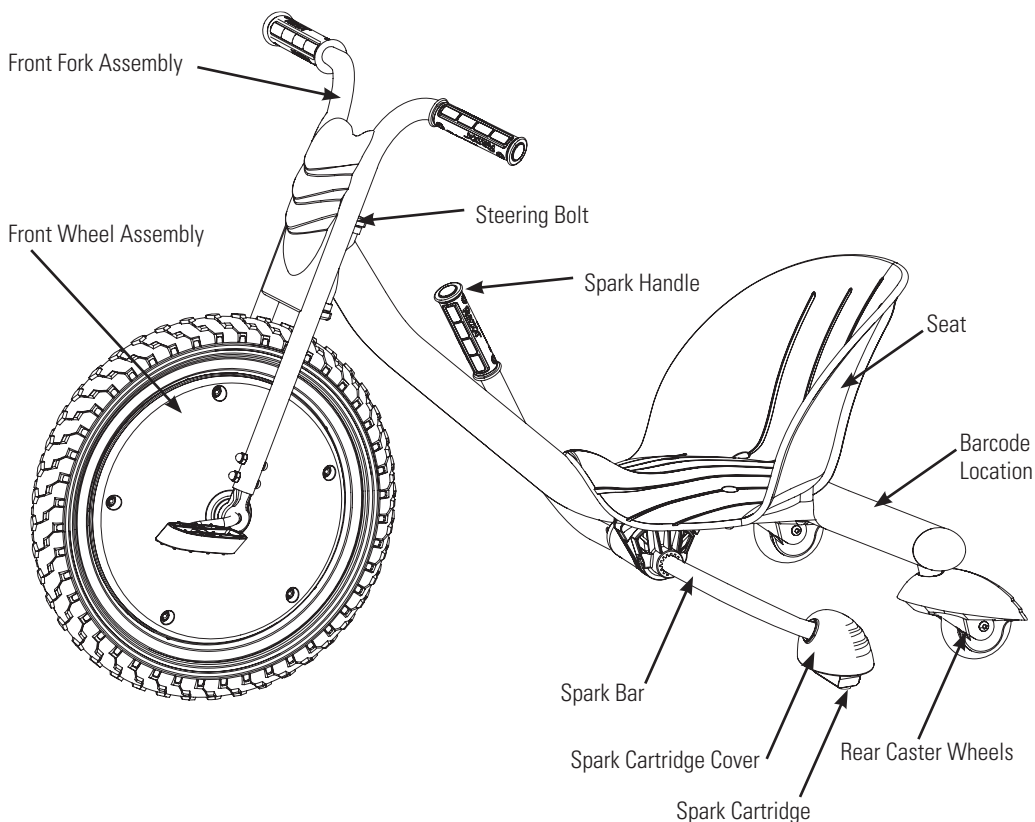
FAILURE TO USE COMMON SENSE AND HEED THE ABOVE WARNINGS INCREASES RISK OF SERIOUS INJURY. USE WITH APPROPRIATE CAUTION AND SERIOUS ATTENTION TO SAFE OPERATION.

BEFORE YOU BEGIN

Remove contents from box and check parts against parts diagram found on page 6. Remove the foam separators that protect the components from damage during shipping. Inspect the contents of the box for scratches in the paint or dents that may have occurred during shipping. Because the FlashRider 360° was partially assembled and packed at the factory there should not be any problems, even if the box has a few scars or dents.

Estimated Assembly and Set-Up Time

Allow up to 15–20 minutes for assembly.



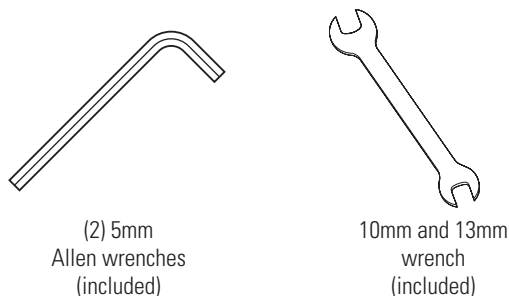
WARNING: DO NOT USE NON-RAZOR PRODUCTS WITH YOUR FLASHRIDER 360°.

The FlashRider 360° has been built to certain Razor design specifications. The original equipment supplied at the time of sale was selected on the basis of its compatibility with the frame, fork and all other parts. Certain aftermarket products may or may not be compatible and will void your warranty.

PRODUCT I.D. CODE

1. Bottom of Frame
2. UPC Side of Box (not shown)

Required Tools

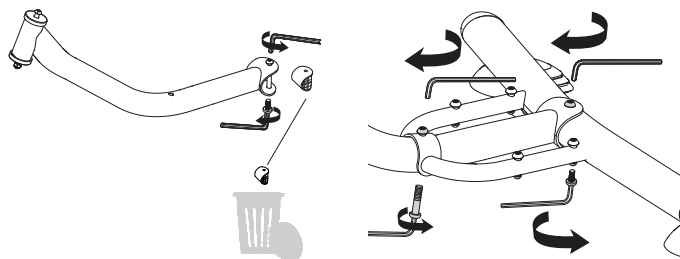


Need Help? Visit our website for replacement parts, product support and a list of authorized service centers at www.razor.com or call toll free 866-467-2967 Monday - Friday 8AM - 5PM Pacific Time. Please have the product I.D. code (located on the bottom of the frame) available for better assistance.

ASSEMBLY AND SET-UP

□ Attaching the Frame

Required Tools: (2) 5mm Allen wrenches

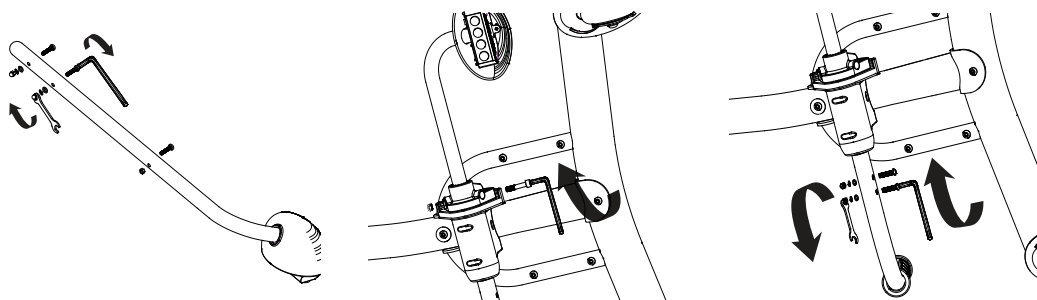


1 Using (2) 5mm Allen wrenches, remove coupling bolt and discard plastic insert.

2 Insert the rear frame to the frame assembly and using (2) 5mm Allen wrenches, securely tighten coupling bolts.

□ Attaching the Spark Bar

Required Tools: 10mm wrench and 5mm Allen wrench



1 Using a 10mm wrench and a 5mm Allen wrench, remove the coupling bolts from the Spark Handle.

2 Insert the Spark Handle (right side) and the Spark Bar (left side) into the spring mechanism. Align the holes on the Spark Bar with the hole on the spring mechanism and tighten coupling bolt with 10mm wrench and 5mm Allen wrench..

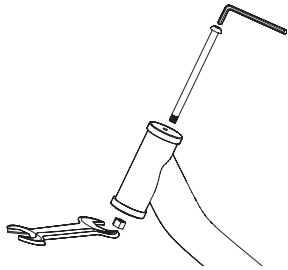
2 Align the holes on the Spark Handle with the holes on the Spark Bar and tighten coupling bolts with 10mm wrench and 5mm Allen wrench.

Need Help? Visit our website for replacement parts, product support and a list of authorized service centers at www.razor.com or call toll free 866-467-2967 Monday - Friday 8AM - 5PM Pacific Time. Please have the product I.D. code (located on the bottom of the frame) available for better assistance.

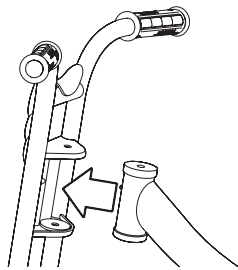
ASSEMBLY AND SET-UP

□ Attaching the Front Fork

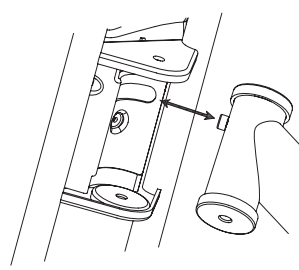
Required Tools: 13mm wrench and 5mm Allen wrench



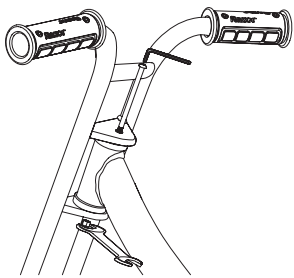
1 Remove the steering bolt and locknut from the frame assembly with a 13mm wrench and 5mm Allen wrench.



2 Insert the front fork into the frame assembly.



3 Be sure to properly align slot on headtube with pin on front fork as shown.

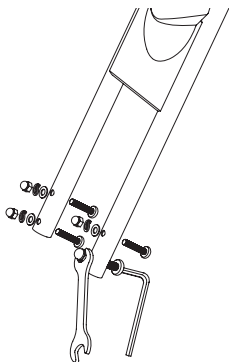


4 Re-insert the steering bolt and secure with locknut using a 13mm wrench and 5mm Allen wrench.

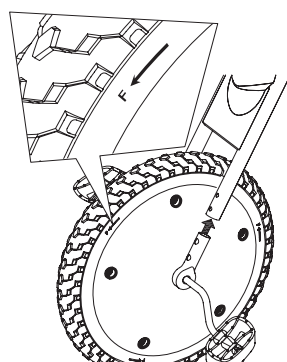
! WARNING: Failing to properly tighten the steering bolt that attaches the front fork assembly to the frame assembly can cause you to lose control and fall.

□ Attaching the Front Wheel

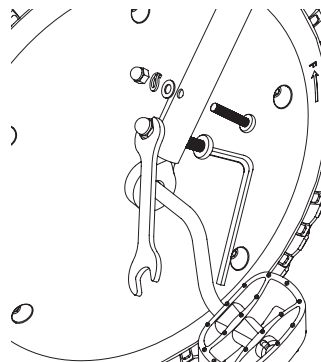
Required Tools: 5mm Allen wrench and 10mm wrench



1 Remove the (4) coupling bolts from the front fork with a 5mm Allen wrench and 10mm wrench.



2 Insert the wheel assembly into the front fork assembly and align holes. When installing the wheel, make sure the letter **"F"** and **arrow** (located on the side of the wheel) are facing the direction as shown above.

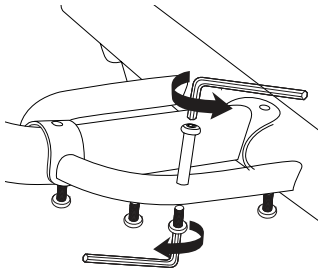


3 Re-insert the coupling bolts through the front fork and tighten securely.

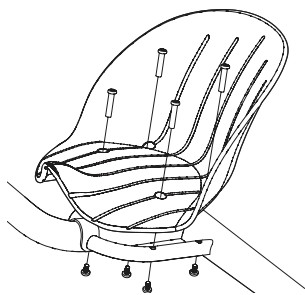
ASSEMBLY AND SET-UP

□ Attaching the Seat

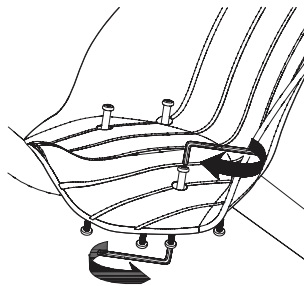
Required Tools: (2) 5mm Allen wrench



1 Using (2) 5mm Allen wrenches, remove the (4) coupling bolts from the frame.



2 Align the (4) holes in seat with the (4) holes in frame. Insert coupling bolts through the top and bottom of the frame.

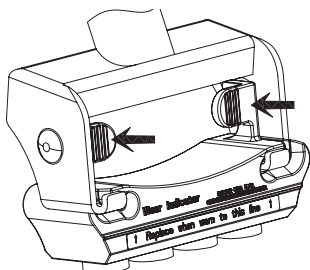


3 Tighten the coupling bolts using (2) 5mm Allen wrenches.

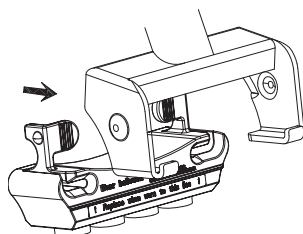
SET UP AND USAGE INSTRUCTIONS

□ Replacing the Spark Cartridge:

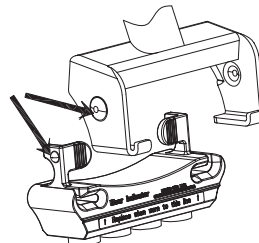
Friction during sparking will eventually wear out the replaceable cartridge and cause the scooter to stop making sparks. Worn out cartridges should be replaced.



1 Using your thumbs, press tabs on both sides of the cartridge to release from the bracket. Slide cartridge away from you and remove from bracket.



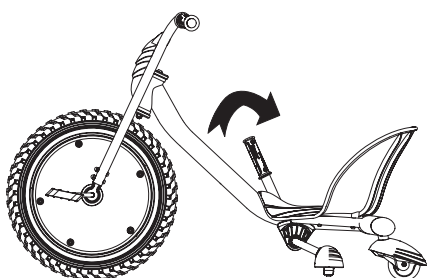
2 Place a new cartridge in back of the bracket making sure to align the slots on the cartridge with the two legs of the bracket. Slide cartridge forward until you hear a click and the thumb tabs are locked in place.



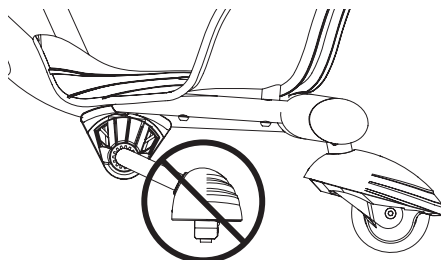
! WARNING: Do not attempt to replace cartridge immediately after riding as cartridge will be hot. Handle only when cool.

! WARNING: Keep fingers clear of Spark Bar hinge.

□ Using the Spark Handle



1 Pull back on the Spark Handle to operate sparking feature.



NEVER push down directly on the Spark Bar, Spark Cartridge or Spark Cartridge Cover itself.

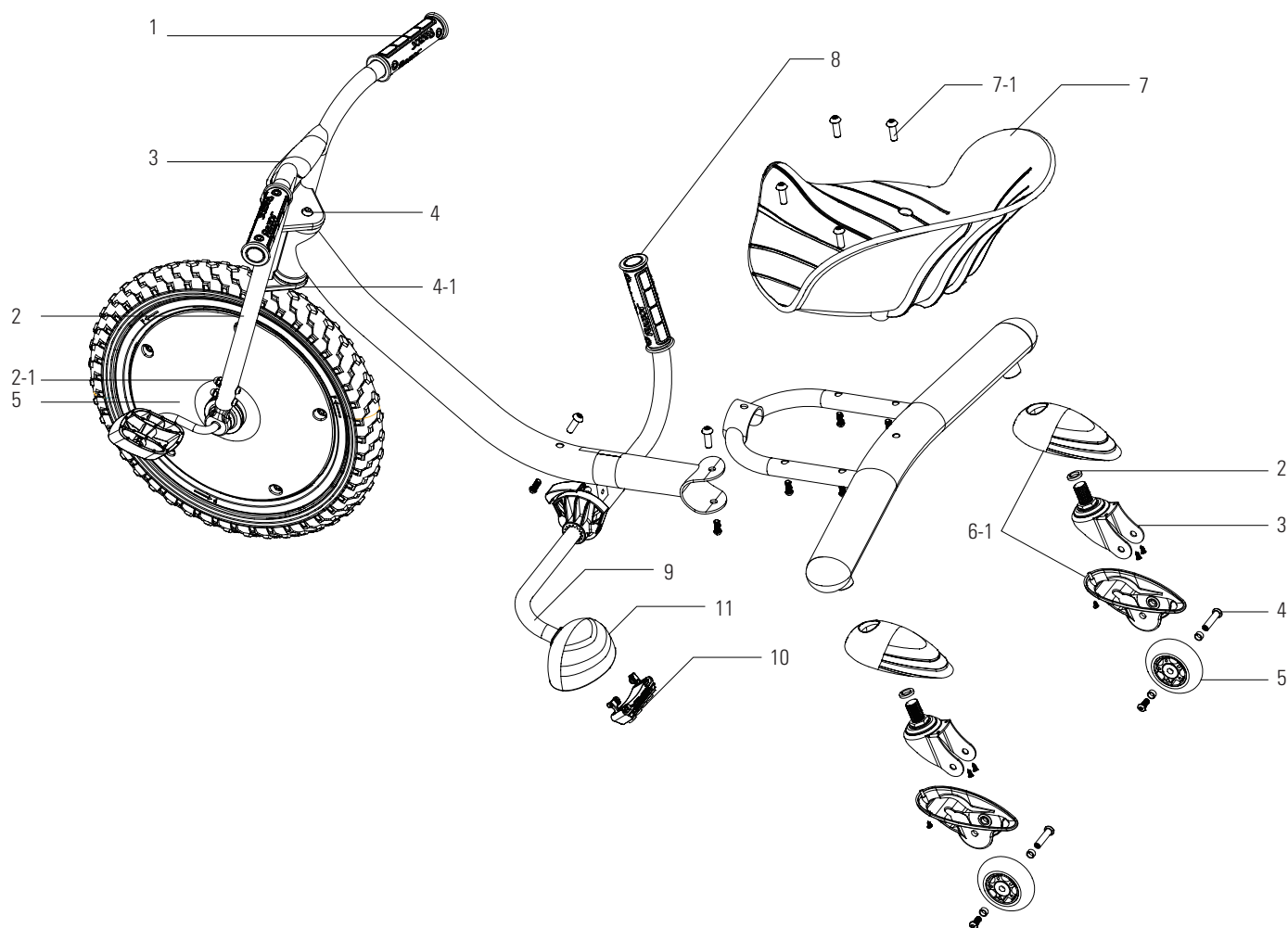
! WARNING: Pulling the Spark Handle upwards too strenuously may cause loss of control.

NOTE: Sparks and Spark cartridge life will vary based on the amount of pressure applied by Spark Handle, the length of time pressure is applied and the smoothness of the riding surface.

FLASHRIDER 360° CASTER TRIKE PARTS

Keep your FlashRider 360° rolling for years with genuine Razor parts. Visit our website to purchase replacement parts.
(Specifications subject to change without notice.)

- | | | | | | |
|-----|---|-----|--------------------------|-----|--------------------------|
| 1 | Handlebar Grip (x2) | 6 | Rear Wheel Assembly (x2) | 7 | Seat |
| 2 | Front Fork | 6-1 | Rear Wheel Cover | 7-1 | Seat Coupling Bolts (x4) |
| 2-1 | Front Fork Coupling Bolts (x4) | 6-2 | Spring Washer | 8 | Spark Handle |
| 3 | Front Cover | 6-3 | Caster | 9 | Spark Bar |
| 4 | Steering Bolt | 6-4 | Axle Bolts | 10 | Spark Cartridge |
| 4-1 | Lock Nut | 6-5 | Wheel | 11 | Spark Cartridge Cover |
| 5 | Front Wheel w/ Pedals and Cranks Complete | | | | |



Need Help? Visit our website for replacement parts, product support and a list of authorized service centers at www.razor.com or call toll free 866-467-2967 Monday - Friday 8AM - 5PM Pacific Time. Please have the product I.D. code (located on the bottom of the frame) available for better assistance.

SAFETY REMINDERS

PRE-RIDE CHECKLIST



Loose Parts

Check and secure all fasteners before every ride. Make sure the steering bolt and casters are tight. There should not be any unusual rattles or sounds from loose parts or broken components. If you are not sure, ask an experienced mechanic to check.



Wheel Care

Periodically inspect the wheels for excess wear.



Frame, Fork and Handlebars

Check for cracks or broken connections. Although broken frames are rare, it is possible for an aggressive rider to crash into a curb or wall, and wreck, and bend or break a frame. Get into the habit of inspecting yours regularly.



Safety Gear

Always wear proper protective equipment, such as an approved safety helmet. Elbow pads and knee pads are recommended. Always wear closed toe shoes (lace-up shoes with rubber soles), never ride barefooted or in sandals, and keep shoe laces tied and out of the way of the wheels.



DO NOT RETURN TO STORE

Failure to follow these instructions may damage your product and void your warranty.

WARRANTY

Razor Limited Warranty

The manufacturer warrants this product to be free of manufacturing defects for a period of 6 months from date of purchase. This Limited Warranty does not cover normal wear and tear, or any damage, failure or loss caused by improper assembly, maintenance, storage or use of the Razor FlashRider 360°.

This Limited Warranty will be void if the product is ever

- used in a manner other than for recreation;
- modified in any way;
- rented.

The manufacturer is not liable for incidental or consequential loss or damage due directly or indirectly to the use of this product.

Razor does not offer an extended warranty. If you have purchased an extended warranty, it must be honored by the store at which it was purchased.

For your records, save your original sales receipt with this manual.

Item Number:
20036559

Need Help? Visit our website for replacement parts, product support and a list of authorized service centers at **www.razor.com** or call toll free 866-467-2967 Monday - Friday 8AM - 5PM Pacific Time. Please have the product I.D. code (located on the bottom of the frame) available for better assistance.

U.S. Patent No. D593,910 S

Printed in China for:
Razor USA LLC
PO Box 3610
Cerritos, CA 90703

Copyright © 2003-2012 Razor USA, LLC. All rights reserved. RAZOR and the Razor Logo Design are among the registered trademarks of Razor USA LLC in the United States and/or select foreign countries. FlashRider is a trademark of Razor USA LLC.