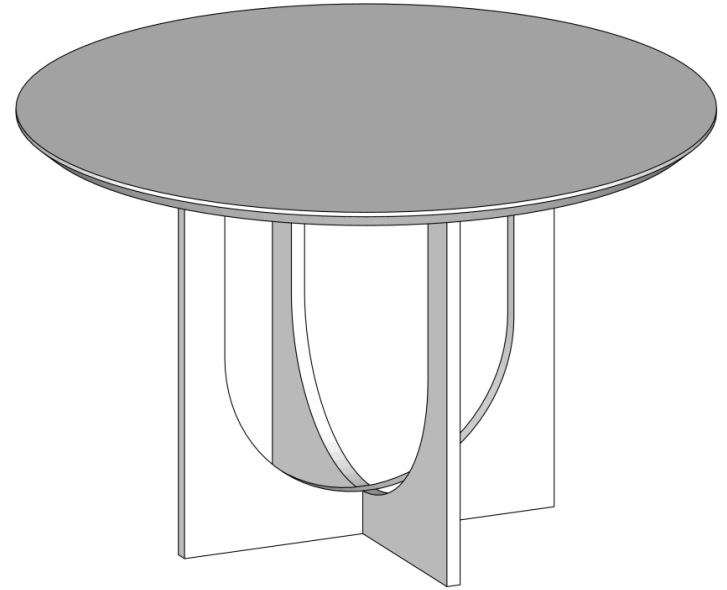


NOUS

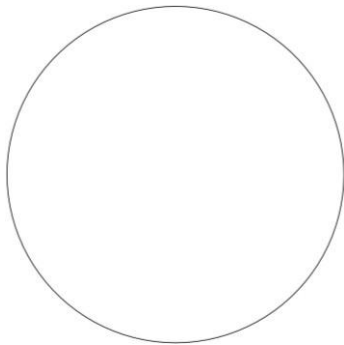
LIVING



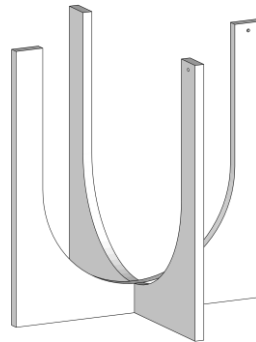
15 min.



YARA ROUND DINING



Tafelblad
Tabletop



Onderstel
Leg

Onderdelen
Components



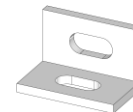
Inbus sleutel x1
Allen Key x1



Schroeven x8
Allen Screw x8

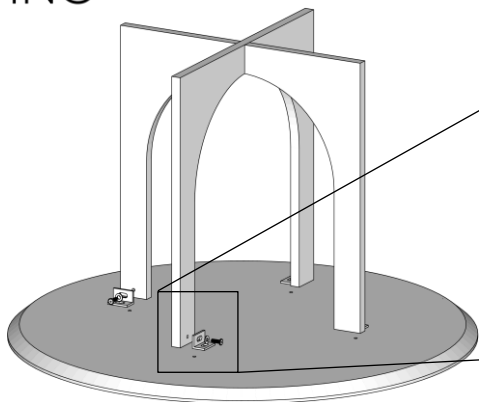


Ringen x8
Washer x8



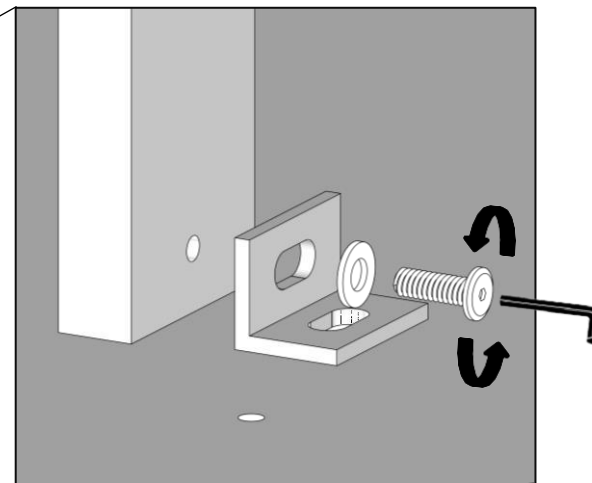
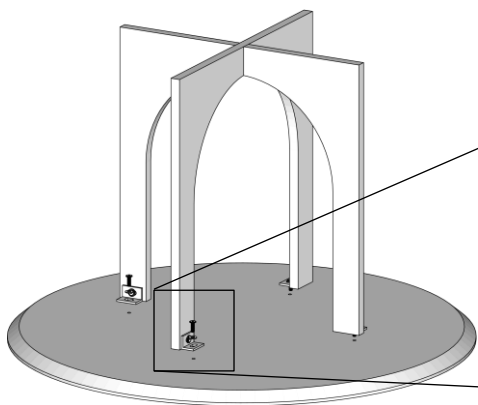
Klemmen x4
L Clip x4

Montagemateriaal
Accessories



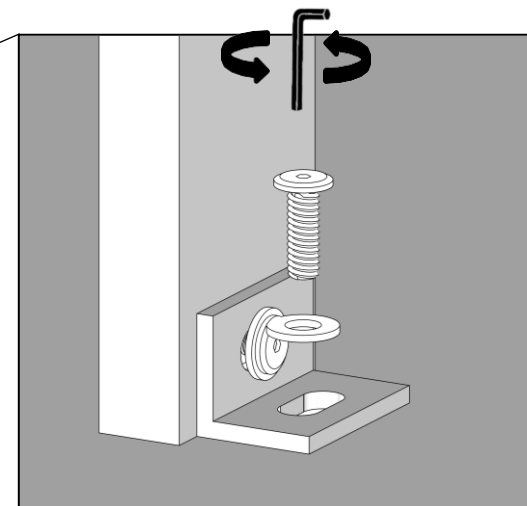
Stap 1:- Leg het tafelblad ondersteboven op een zachte ondergrond. Plaats de poot erop met de schroef naar het tafelblad gericht.

Step 1:- Place the tabletop up side down on a soft surface. Place the leg on top of it with the Screw towards the tabletop.



Stap 2:- Bevestig de onderdelen door middel van de inbus sleutel.

Step 2:- Join them with the hardware.



NOUS
LIVING

