

## EN Instruction manual

### IMPORTANT SAFETY INSTRUCTIONS:

- Please use standard electricity service voltage (AC 220-240V,50/60Hz). Connecting to the incorrect voltage may cause damage to the appliance and will invalidate the warranty.
- Please don't share the power supply with other high-powered electric appliances.
- To avoid the electric shock, please don't submerge the appliance, plug or powercord in water or other liquids.
- Please don't leave this appliance unattended while in operation.
- Please fill the water tank to maximum before using and observe the water level during use.
- Please don't lay hose on the ground. Don't wind hose. Don't operate the appliance if cord is damaged.
- Always keep the hose and nozzle elevated above the water tank, so that the steam can be spouted conveniently. Never insert any objects into any opening or hose.
- Please don't cut or extend the steaming hose or power cord.
- Please don't place the nozzle on any surface or appliance power cord directly while it is hot or plugged in.
- Please be cautious about steam spraying out from the nozzle. Do not direct nozzle at people or animals, in case the steam exploding. Do not use the steamer on garments while it is being worn.
- Please don't lay or overturn the appliance when in use, or the hot water will leakage.
- Turn off, unplug and allow the appliance to cool completely for at least 30 minutes prior to draining the water tank and water reservoir and storing.
- Always turn off and unplug unit before refilling, draining, cleaning or storing.
- For indoor use only.
- Please keep the appliance away from flammable materials and chemicals.
- Please don't fill the water tank with hot water or corrosive cleaning agents which would cause damage. Distilled or filtered water is strongly recommended.
- Only use Princess accessories on your Princess appliance. The use of accessory attachments rather than those provided by Princess may result in fire, electric or irreversible damage to the appliance.
- This appliance is not intended to be designed for children and other persons whose physical, sensory or mental capabilities is disabled or whom lack of sufficient experience or knowledge, please prevent them from using the appliance without supervision or instruction by a person who can ensure that they can use the appliance safely.

### PARTS DESCRIPTION

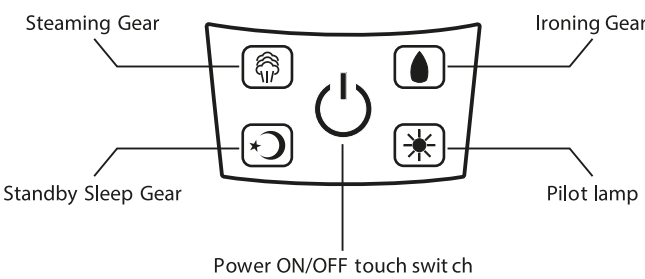
1. Rotate Ironing Board
2. Collar Hanger
3. Water Tank
4. Telescopic Poles
5. Rotate Steam Nozzle
6. Body Base
7. Main Body
8. Fabric Boot Cap
9. Nozzle Hanger

### PRODUCT SPECIFICATION

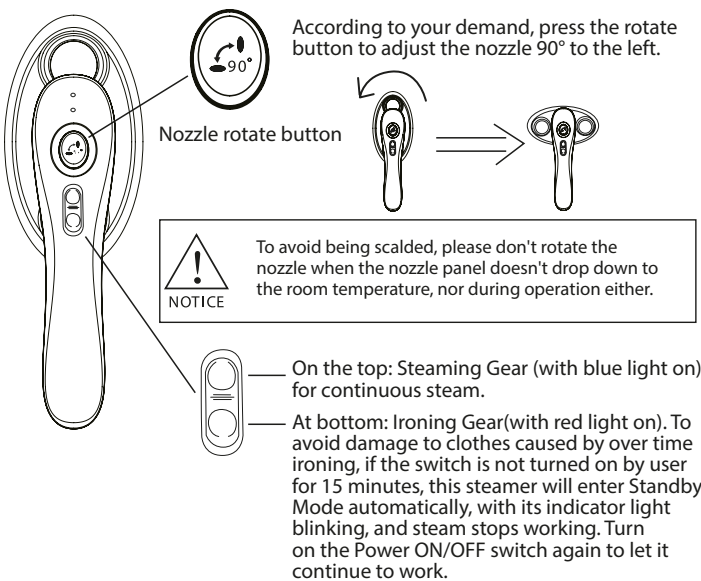
Water Tank Capacity	1.2L
Steam Output Time	60s
Input Voltage	220-240V~50/60Hz
Output Power	1920-2280W

### FUNCTION FEATURES

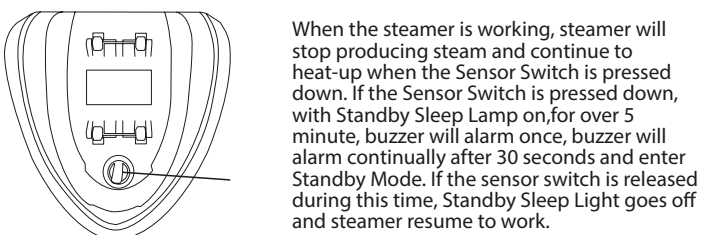
#### Main Body Display Panel



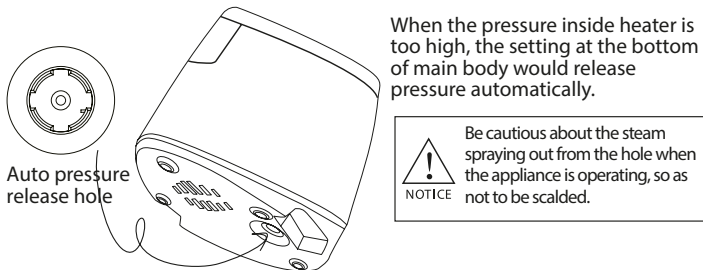
#### Handle function buttons



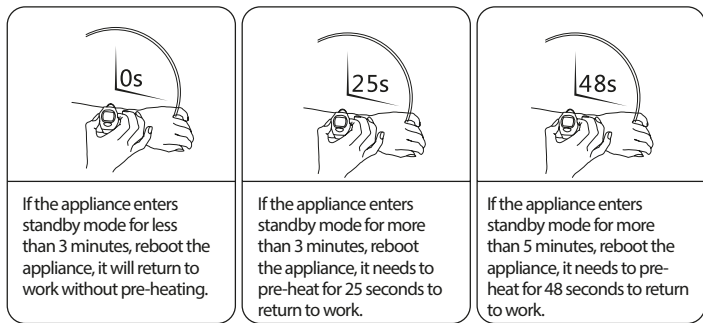
#### Sensor Switch on Main Body



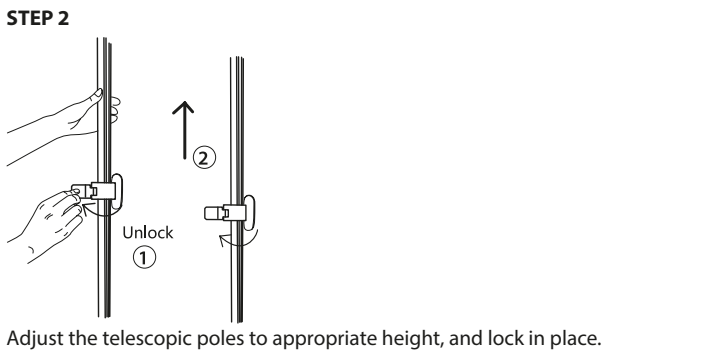
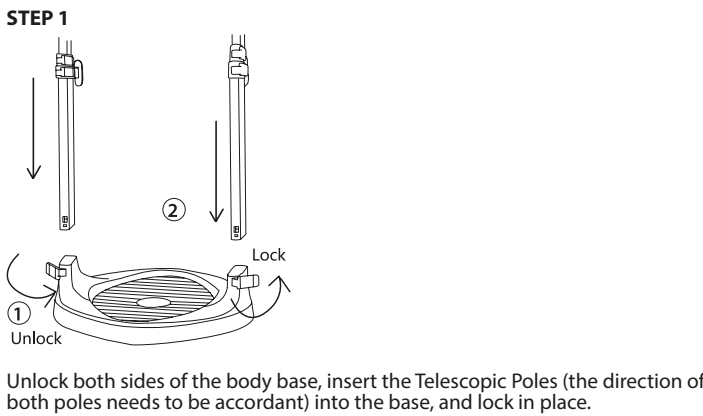
### Pressure release setting



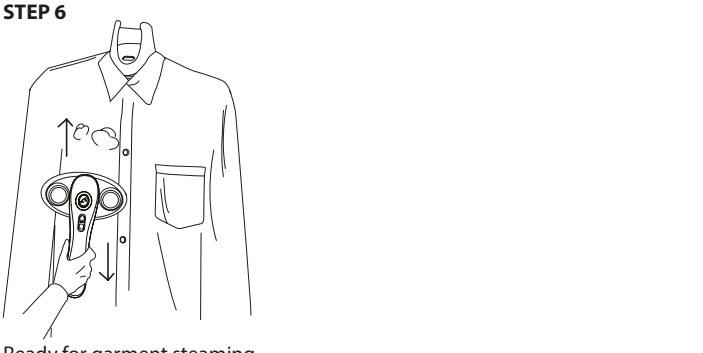
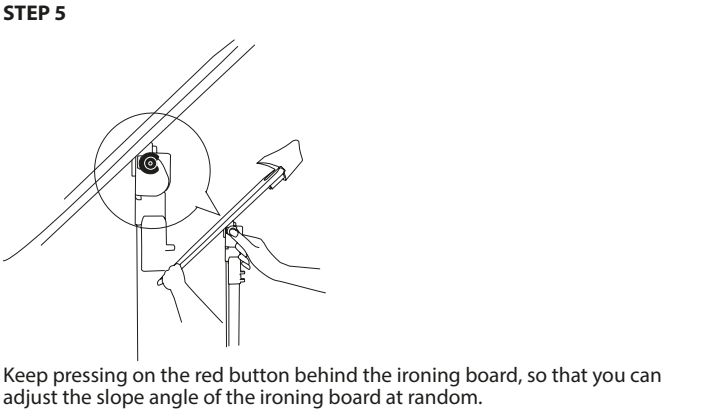
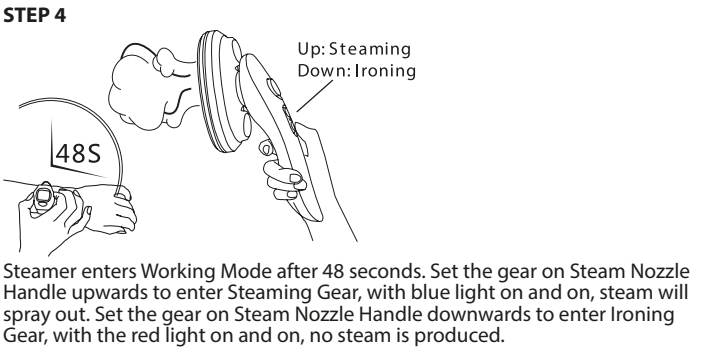
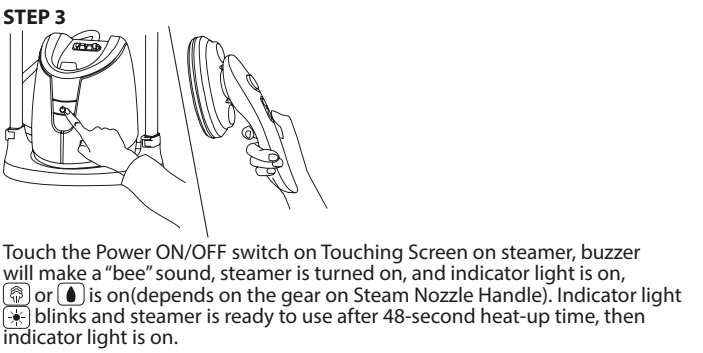
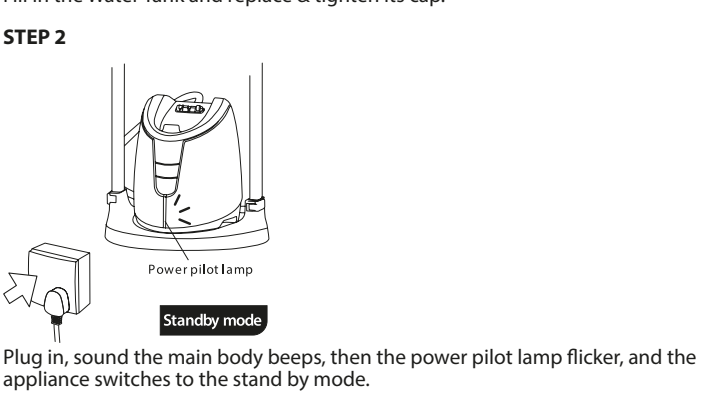
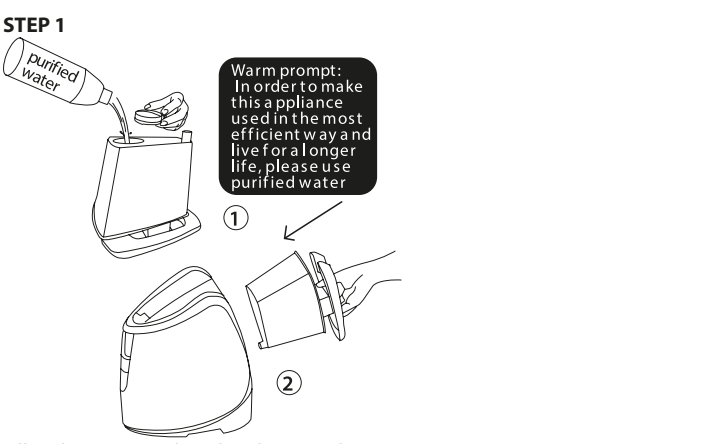
### Standby mode



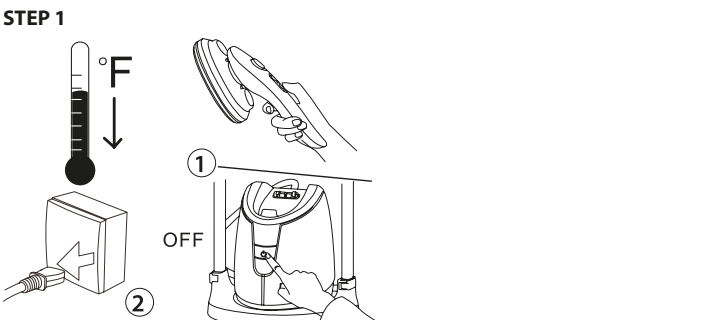
### PRODUCT INSTALLATION



### INSTRUCTION FOR USE

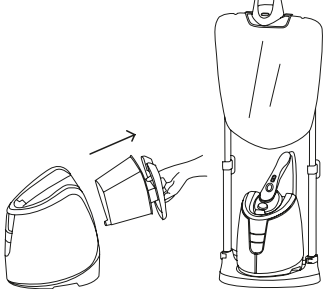


### MAINTENANCE AND CLEANING



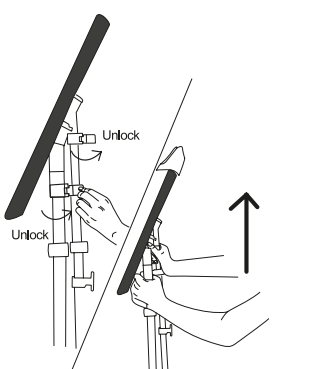
Touch the Power ON/OFF switch on Touching Screen on steamer to turn off the steamer, buzzer will make a "bee" sound, steamer is turned off, Indicator Light blinks and steamer is under Standby Mode. Pull out the Plug and wait for at least 30 minutes till the steamer cools down completely.

### STEP 2

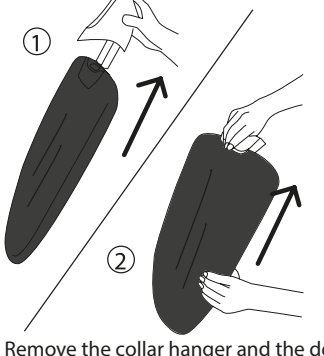


### DISASSEMBLY INSTRUCTION FOR IRONING CLOTH

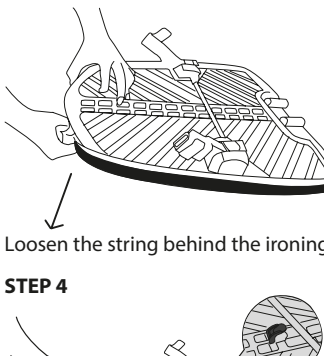
#### STEP 1



#### STEP 2



#### STEP 3

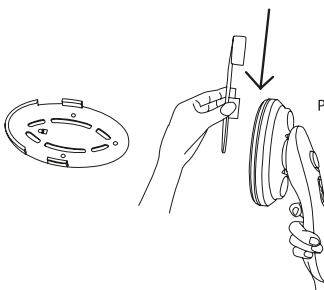
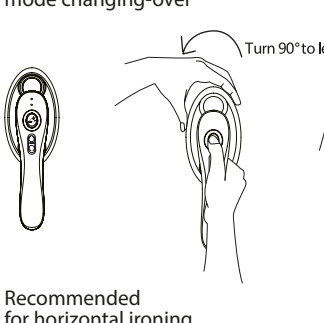


#### STEP 4



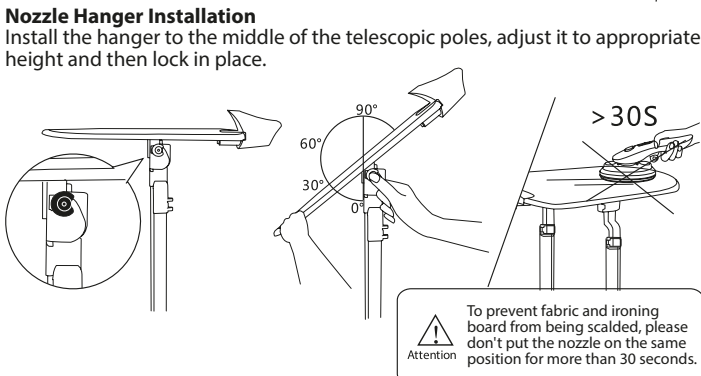
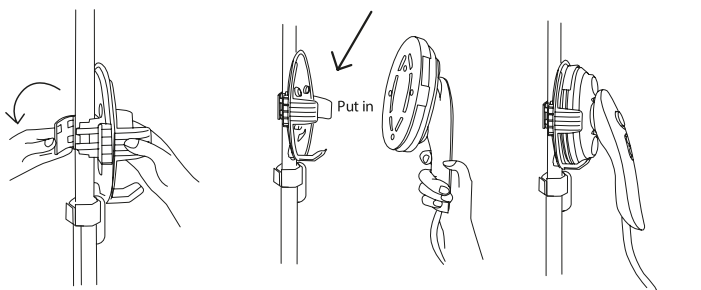
### ACCESSORIES INSTRUCTION FOR USE

#### Rotate nozzle mode changing-over



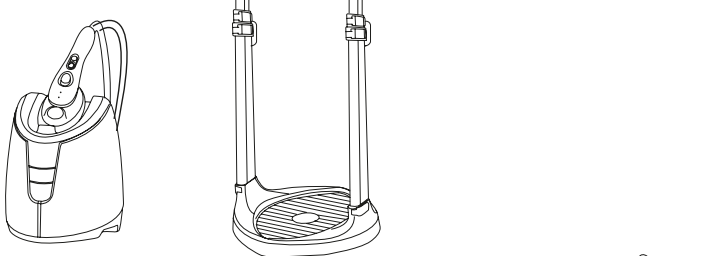
#### Fabric Boot Cap Installation

Warm prompt: To prevent the fabric from being damaged by the high temperature, please choose to use the boot cap in appropriate according to how the temperature resistant of the fabric is. Attention: When the appliance is still operating or the nozzle panel doesn't drop to room temperature, please don't install or dismantle the boot cap so as not to be scalded.

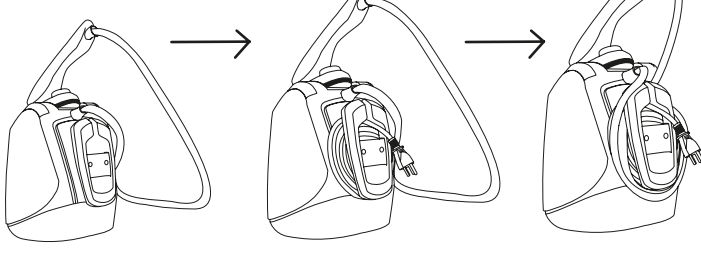


### Use of Rotate Ironing Board

Attention: Be cautious of being hurt while adjusting the ironing board.



### Use of creel



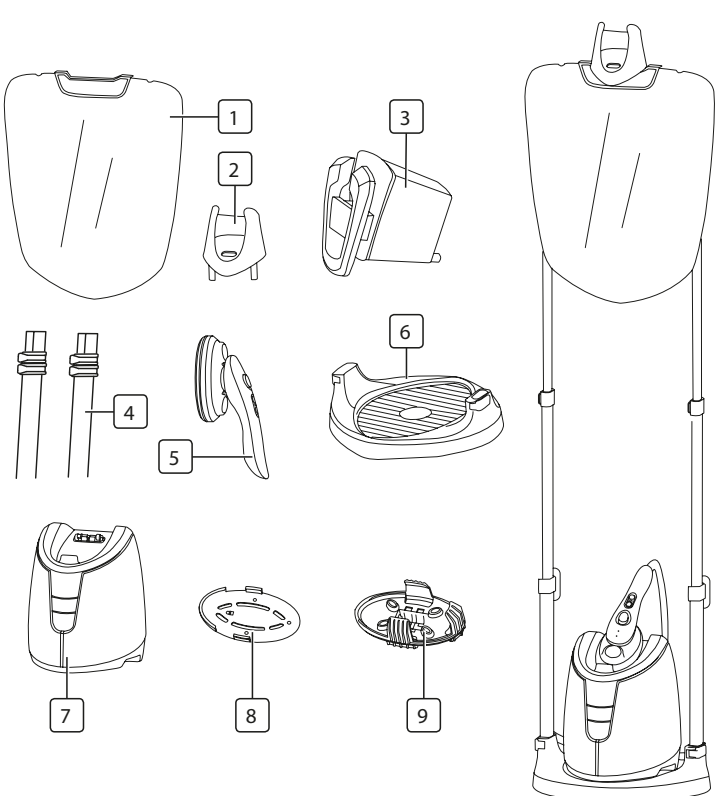
### TROUBLE SHOOTING

Problem	Reason	Solution
Unit fails to work. Pilot lamp does not illuminate	<ul style="list-style-type: none"><li>The unit is not plugged in</li><li>House hold power system problem / fuse is blown</li></ul>	<ul style="list-style-type: none"><li>Plug in the unit</li><li>Call a qualified electrician for help</li></ul>
Unit fails to steam Pilot lamp illuminates	<ul style="list-style-type: none"><li>Water Tank is empty</li><li>Thermal cut-off is damaged</li><li>Thermostat is damaged</li><li>Switch on Handle or Sensor Switch on Main Body or Water pump is damaged</li></ul>	<ul style="list-style-type: none"><li>Refill the Water Tank</li><li>Call a qualified electrician for help.</li><li>Call a qualified electrician for help.</li><li>Call a qualified electrician for help.</li></ul>
Nozzle panel heating and works normally, Pilot lamp does not illuminates	Pilot lamp is broken	Call a qualified electrician for help
Less steam spraying out	Voltage is too low	Please avoid to use this appliance during the surge in electricity demand
Nozzle has water leakage problem	<ul style="list-style-type: none"><li>It is normal that a few of water sprayed out from the nozzle when turn it on.</li><li>Heating pot does not work</li></ul>	<ul style="list-style-type: none"><li>This phenomenon will distinguish after one minute</li><li>Call a qualified electrician for help</li></ul>
Water tank leakage	<ul style="list-style-type: none"><li>Water tank's screw is not tightened</li><li>Water tank is broken</li></ul>	<ul style="list-style-type: none"><li>Tighten the screw of water tank</li><li>Call a qualified electrician for help</li></ul>
Appliance leakage	Inside water tube is broken	Call a qualified electrician for help
Water tank is out of shape	Fill the tank with hot water	Call a qualified electrician for help

### ENVIRONMENT

This appliance should not be put into the domestic garbage at the end of its durability, but must be offered at a central point for the recycling of electric and electronic domestic appliances. This symbol on the appliance, instruction manual and packaging puts your attention to this important issue. The materials used in this appliance can be recycled. By recycling of used domestic appliances you contribute an important push to the protection of our environment. Ask your local authorities for information regarding the point of recollection.

### PARTS DESCRIPTION



service.princess.info