

**1**

1x  + 1x 

---

 → 1x  + 1x  + 2x  NiMH AAA 400mAh rechargeable\*



**2**

 ↔ min. 1 m 


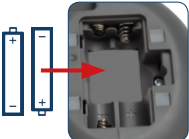


max. 50 m  ↔ max. 300 m 

max. 300 m 

**3**

 →  → 

---

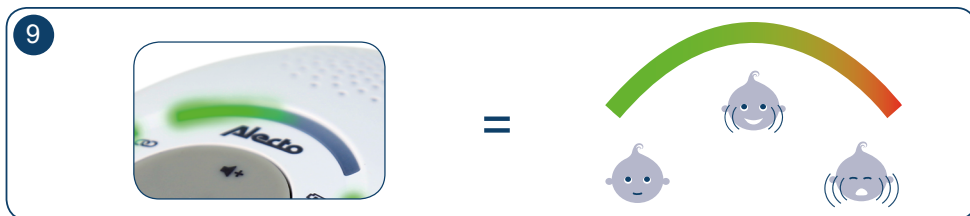
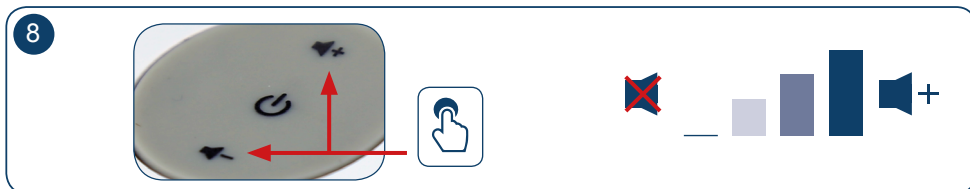
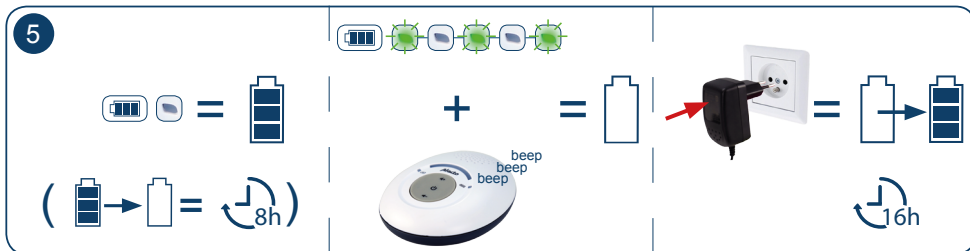
 →  →  → 

\*\*

**4**

 ON / OFF  3sec 

 ON / OFF  3sec 



#### DECLARATION OF CONFORMITY

This device complies with the essential requirements and provisions as described in the European Directive 2014/53/EU.  
The declaration of conformity is available at: <http://DOC.hesdo.com/DBX-115-DOC.pdf>

Use only supplied adapters

=  
Input: 100-240V~  
50/60Hz 150mA  
Output: 6V 450mA  
Model: S004LV0600045  
- - - - -

- \* Use only rechargeable NiMH battery listed below:  
1) GPI, VTRHC043C033 (Designation No.: xx40AAAHC)  
2) CORUN, NI-MHAAA400 (Designation No.: NI-MH AAA 400mAh 1.2V)  
Caution: Risk of explosion if battery is replaced by an incorrect type!  
Dispose of used batteries according to the instructions.

- \*\* For pluggable equipment, the socket-outlet shall be installed near the equipment and shall be easily accessible.

Frequency Range : 1880-1900 Mhz  
Maximum Power : < 24 dBm

For Indoor use only

Hesdo bv.  
Azielaan 12, 5232 BA  
's-Hertogenbosch  
The Netherlands  
[www.alectobaby.com](http://www.alectobaby.com)

v1.1